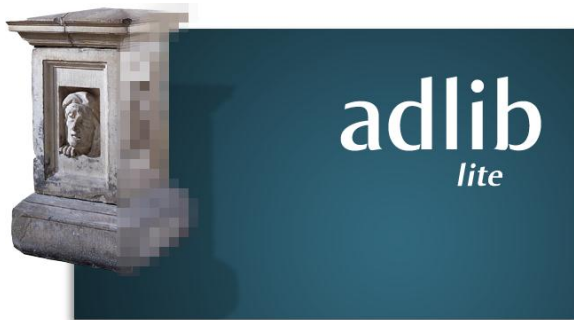


Adlib Museum Lite

Free collection catalogues for everyone

Adlib Museum Lite is a new software package that enables small museums and private collectors to record details of their collections in a straightforward yet professional way.

Best of all, they can do so without any costs, because Adlib Museum Lite is completely free. We are offering the opportunity to get started on your computerised collection catalogue right now!



Built on a solid foundation

Adlib Museum Lite is based on the renowned Adlib Museum software which is used by hundreds of organisations worldwide, ranging from Heritage Centres to National Museums. Adlib Information Systems has over 20 years of experience in museum automation on an international level. The benefit of our experience and technology is now available to all, at no charge.

Our aims in releasing this software are:

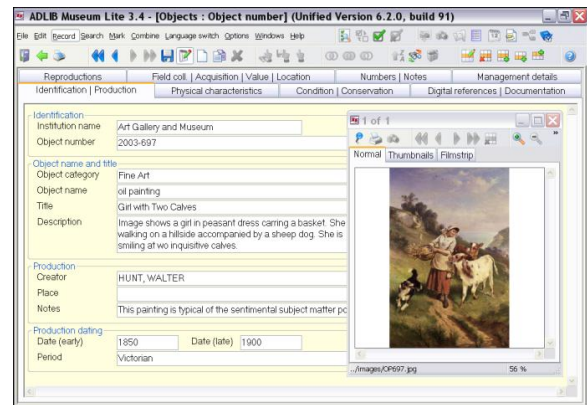
- to encourage good practice across the cultural heritage domain, through the use of international standards;
- to enable more people to become familiar with our high quality software solutions.

If in the future the need arises to upgrade, you can easily do so through our product range. Of course, any data you have entered into Adlib Museum Lite will be transferred safely.

User-friendly

Adlib software is well known for being exceptionally efficient and easy to work with, and we have not compromised these strengths in Adlib Museum Lite.

Data is entered and viewed through clearly structured interfaces offering on-line help, drop-down lists and look-up tables to make cataloguing straightforward. Every user can personalise the software by setting their preferred font type and size, toolbar layout, image viewer settings and much more.



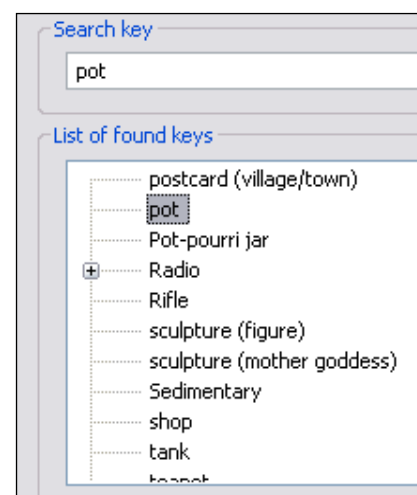
Object Catalogue

At the heart of Adlib Museum Lite is the object catalogue. This holds all data about your collection objects. All types of objects may be recorded, from furniture to fine art and from stamps to steam engines. Catalogue fields are arranged in logical groups:

- identification;
- production & dates;
- physical description;
- techniques & materials;
- condition;
- documentation;
- location;
- insurance valuation;
- acquisition & ownership.

Keywords

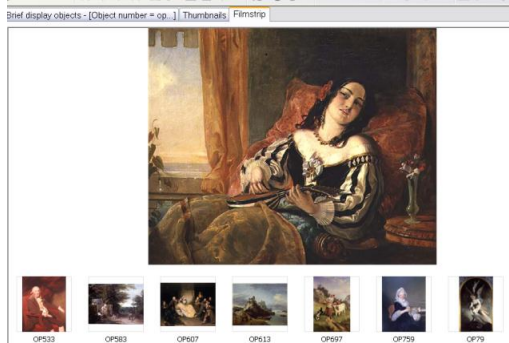
Keywords or names that you enter are automatically validated against your own 'dictionary'. New words may easily be added as you go along. This assures the quality of your data entry, search results, and greatly improves the efficiency of your work.



Pictures, books, journals, people...

You can store a lot of other kinds of information in Adlib Museum Lite, as well as details about objects. If you have a digital camera, you can record images from those too. You can also create records for books, journals and journal articles and link

them to relevant object records. The 'persons and institutions' part of the system enables you to record full biographic details of the people or organisations associated with your collections.

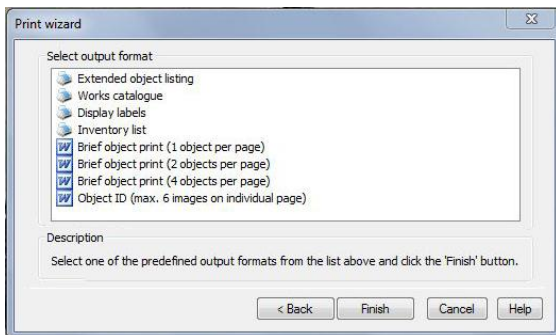


Step-by-step searching

Any current user will tell you that retrieving your data in Adlib is easy and fast. Using our friendly Search wizard, you'll find what you are looking for in a few simple steps. It is also easy to search on multiple criteria, such as a specific category of object from a particular time period.

Reports

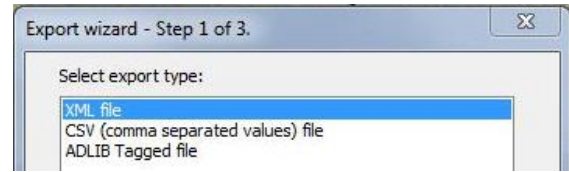
With the easy to use print assistant, you can create printed reports of any selection of collection records. You have the choice of a number of predefined page lay-outs.



Data matters!

We've been in this business long enough to understand that your data is of great value, and that you don't want it to be 'locked in' to a particular format or system.

That's why we've made it easy to get your data out of Adlib in a variety of standard formats, such as XML. Our use of XML guarantees that your data entry work is fully future-proof.



System requirements

You will need a PC with the following specification (or better) to run Adlib Museum Lite:

- Pentium III/IV processor;
- 256MB RAM;
- Windows XP, Windows 2000 or Windows 98SR2;
- required disk space: software 40MB, plus 2-5KB per object record, plus 50-200 KB per image (1GB approx total for 5,000 records).

Support

We provide support to users of Adlib Museum Lite via our web site. Here you'll find the answers to frequently asked questions, and you can download free updates of the software and the manual as and when they become available.

Let's get started!

You can download Adlib Museum Lite from the Adlib website: www.adlibsoft.com. The automatic installation procedure is very straightforward and assumes no technical knowledge. After installation, you can get to work straight away. When you download the Museum Lite user software you also download a Museum Lite user guide. Online help texts are available on all screens throughout the application. The museum Lite user guide is also available on our website as a separate document.

Adlib Information Systems

P.O. Box 1436
3600 BK Maarssen
The Netherlands
Tel.: +31 (0)346 - 586800
E-mail: info@adlibsoft.com
www.adlibsoft.com

The Adlib Museum family of products

Product	Record Limit	Multi-user	Record Images	Can Customise	Workflow Support	Museum Catalogue	Archive Catalogue	Library Catalogue	Support
Lite	5,000		✓			Basic		Limited	On-line
Basis	No limit	✓	✓			Extended		Limited	On-line + helpdesk
Standard	No limit	✓	✓	✓	✓	Extensive		Limited	On-line + helpdesk
Plus	No limit	✓	✓	✓	✓	Extensive	Optional	Optional	On-line + helpdesk
XPlus	No limit	✓	✓	✓	✓	Extensive	✓	Full	On-line + helpdesk

